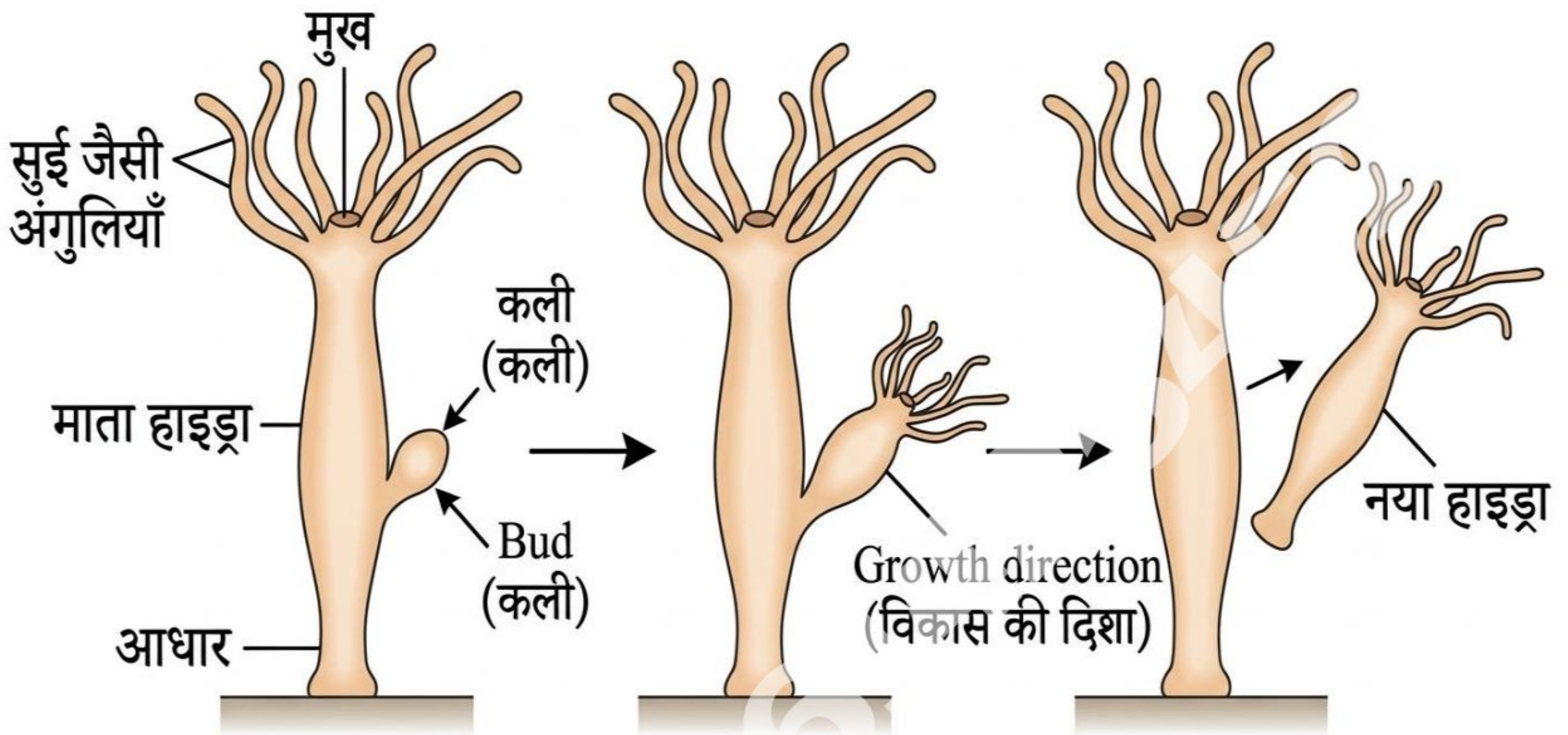
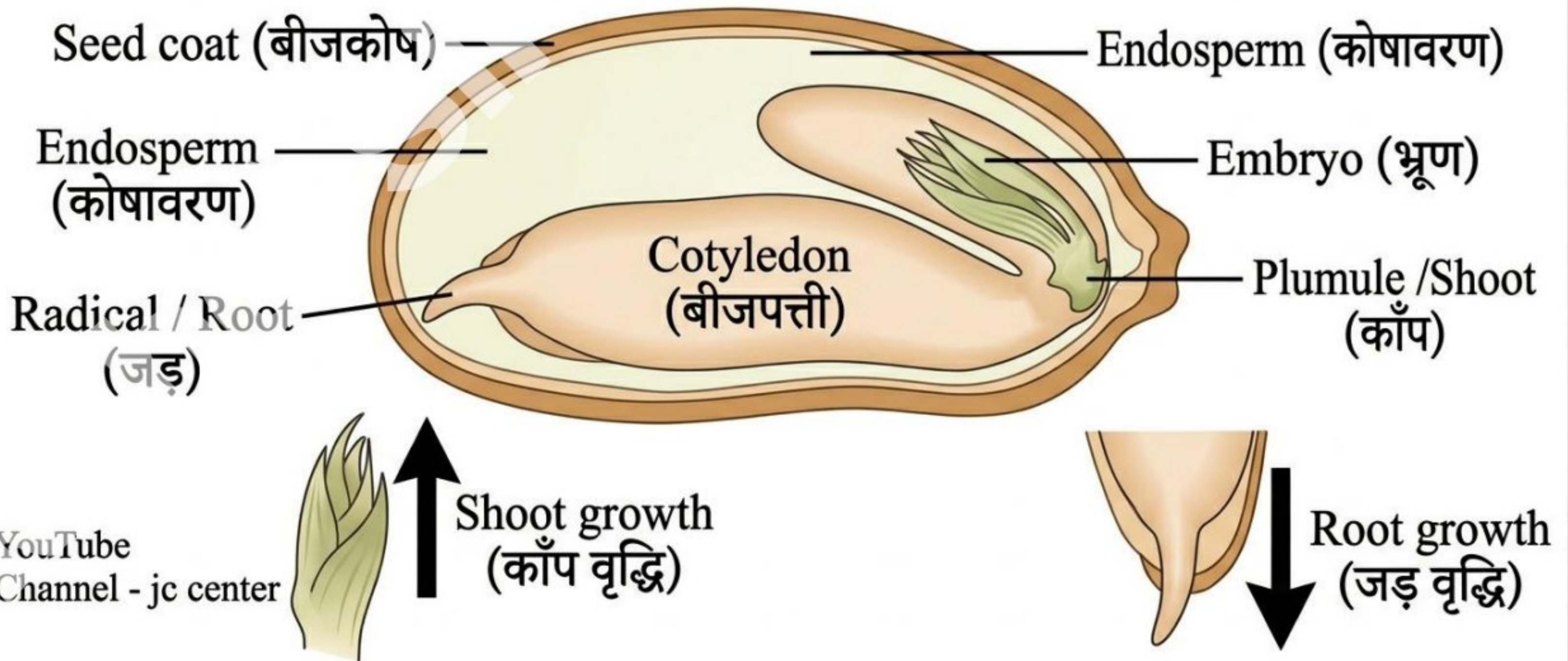


JIGYASA COACHING CENTER

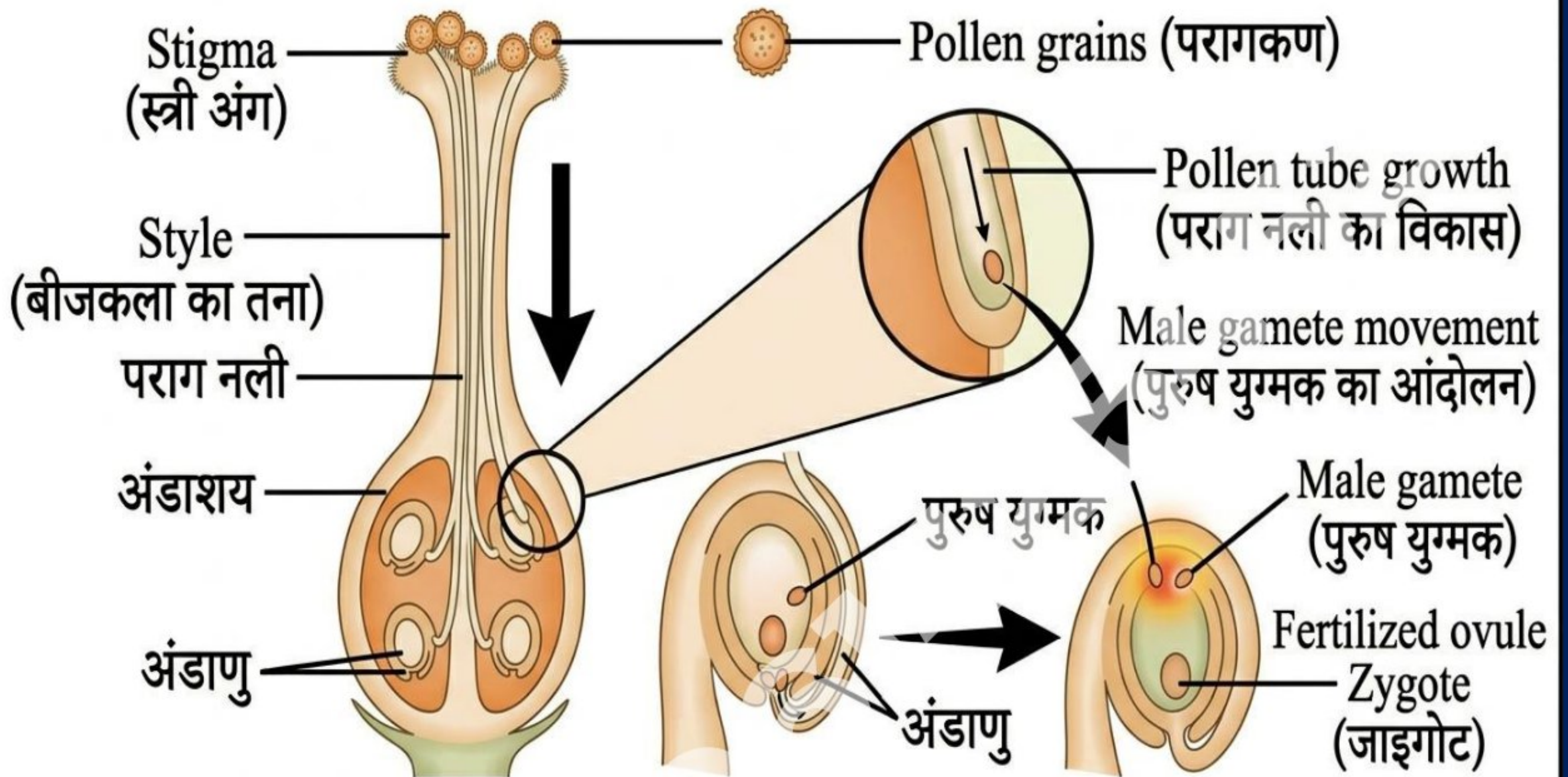


JIGYASA COACHING CENTER

JIGYASA COACHING CENTER



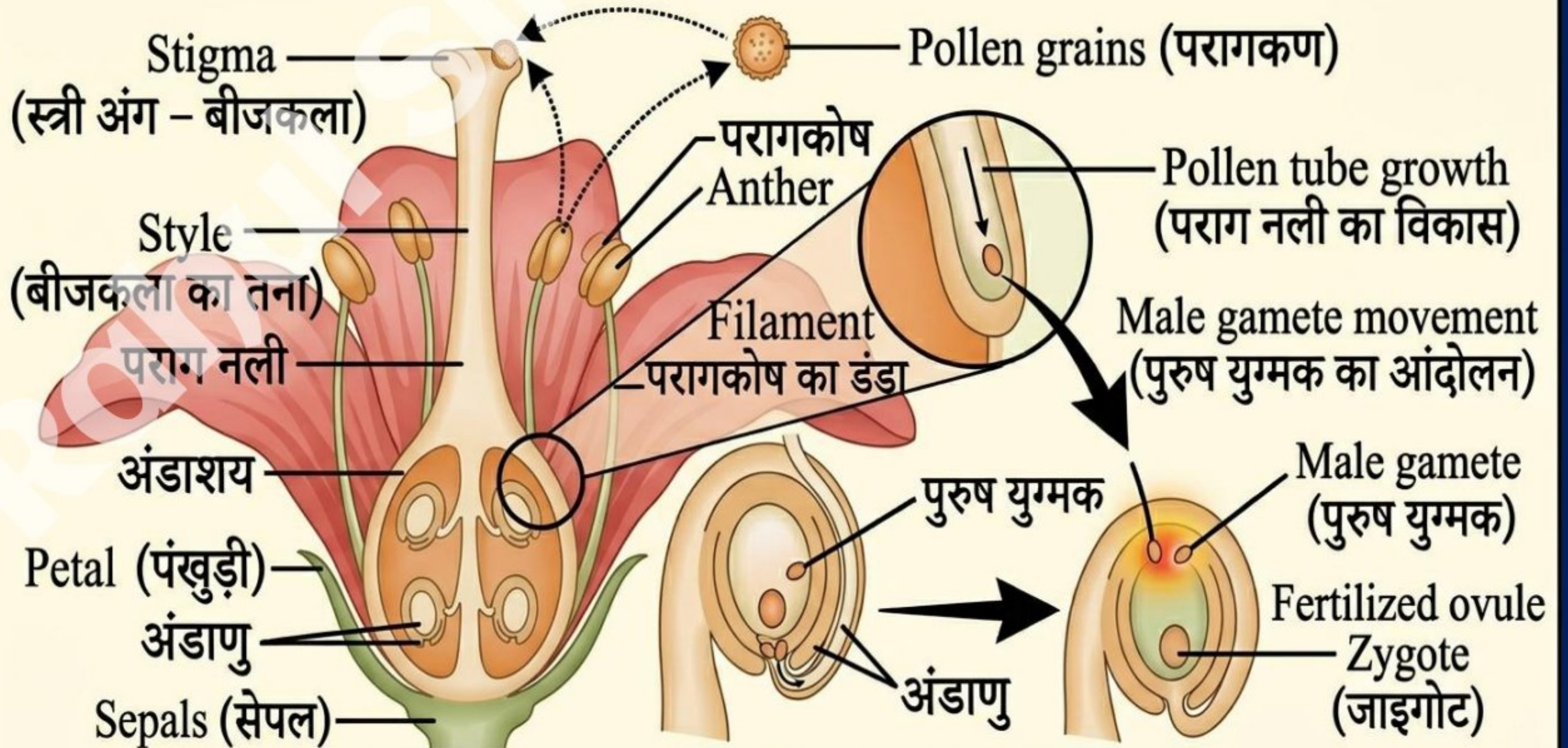
JIGYASA COACHING CENTER



YouTube Channel - jc center

JIGYASA COACHING CENTER

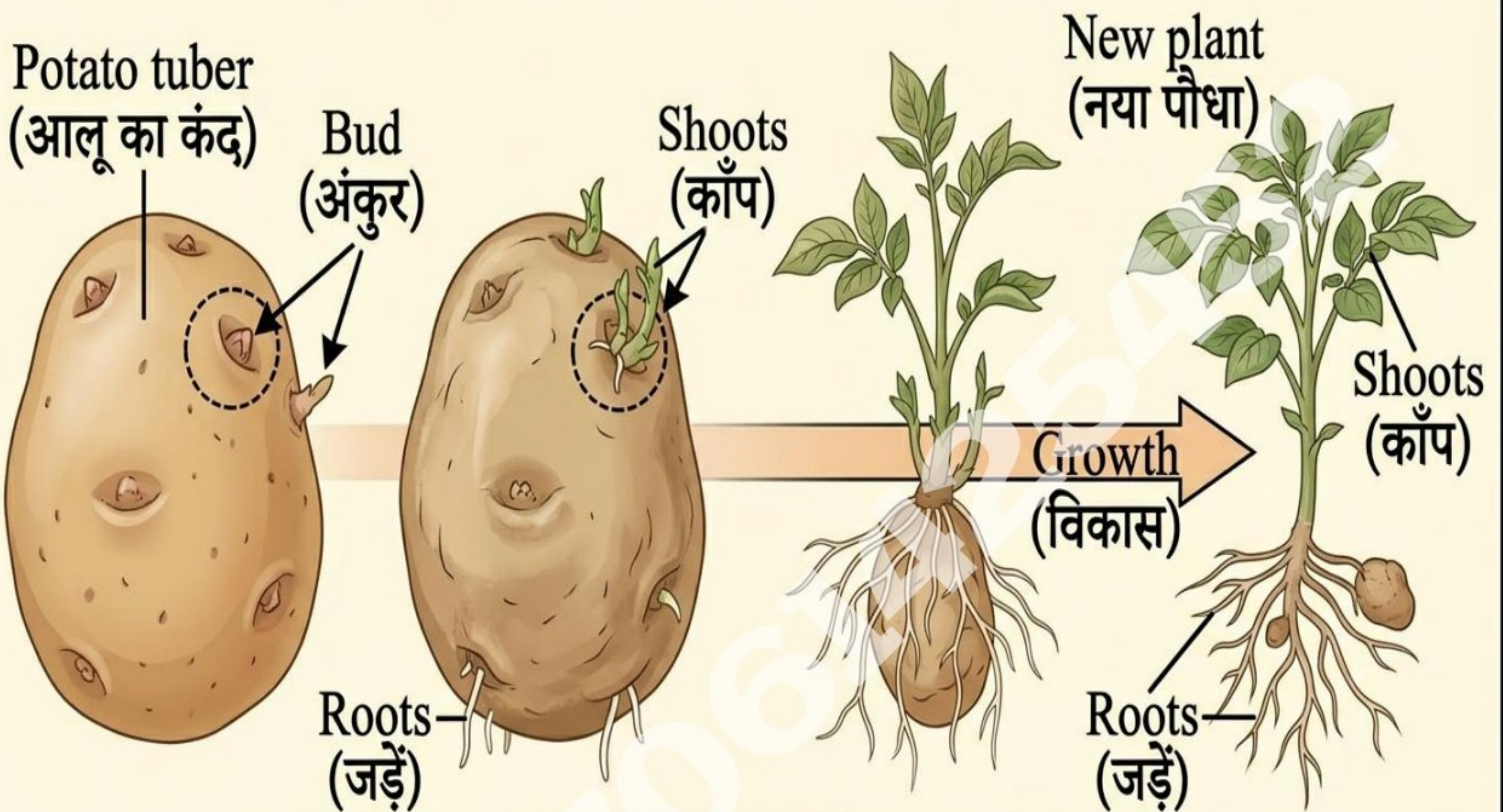
JIGYASA COACHING CENTER



YouTube Channel - jc center

JIGYASA COACHING CENTER

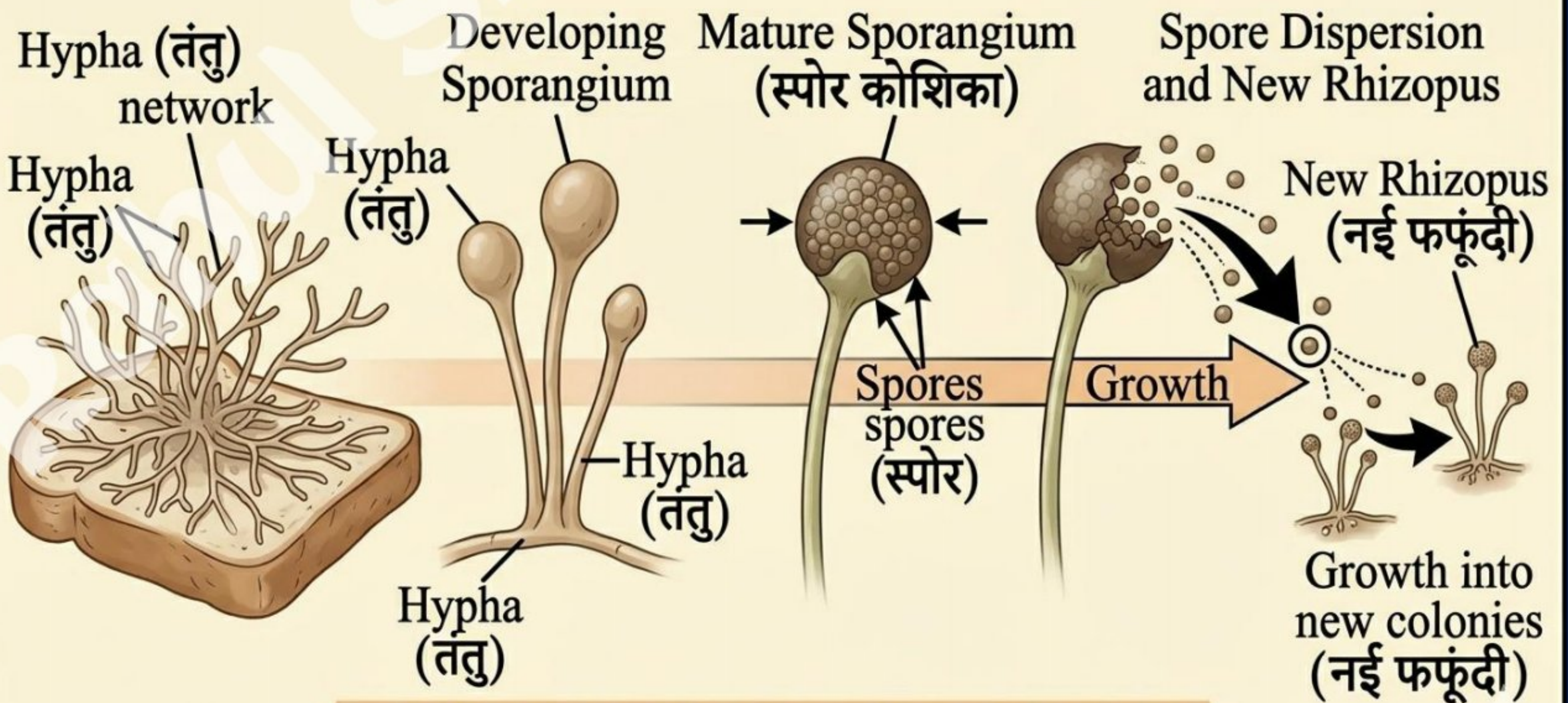
JIGYASA COACHING CENTER



YouTube Channel - jc center

JIGYASA COACHING CENTER

JIGYASA COACHING CENTER



YouTube Channel - jc center

JIGYASA COACHING CENTER

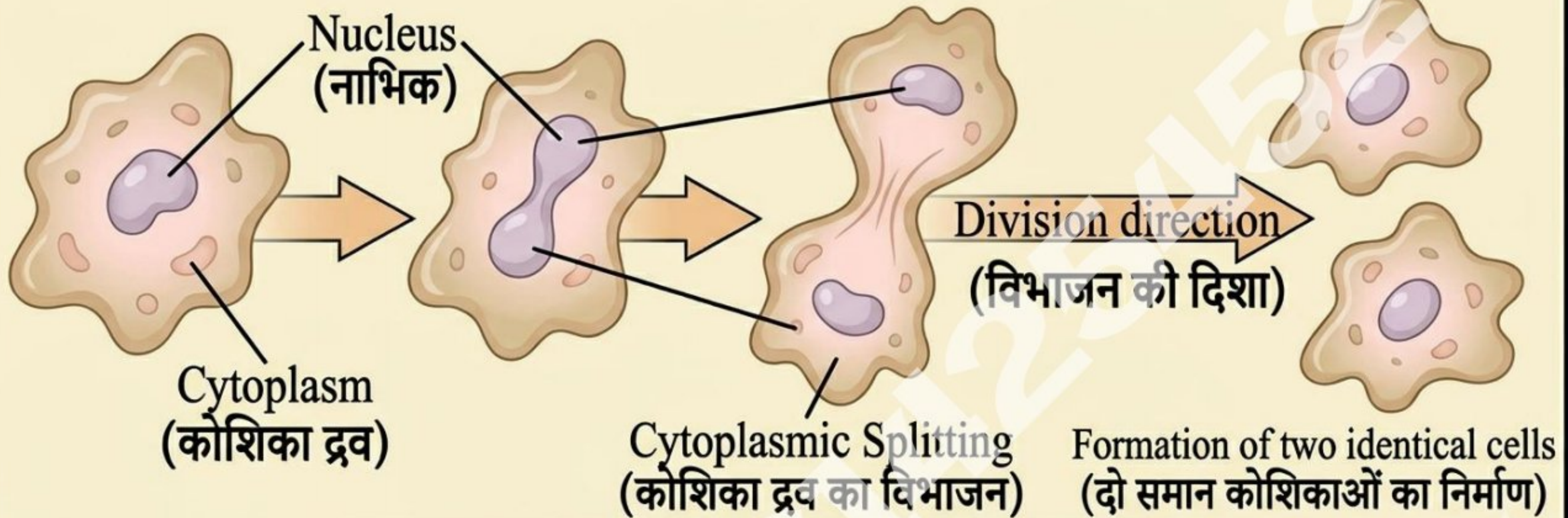
JIGYASA COACHING CENTER

Parent Amoeba
(मूल अमीबा)

Nuclear Division
(नाभिक का विभाजन)

Cytoplasmic Splitting
(कोशिका द्रव का विभाजन)

Two new Amoebas
(दो नई अमीबा)



YouTube Channel - jc center

JIGYASA COACHING CENTER



Biology Class 12 – Complete Guide!

Chapter 01 - पुष्पी पादपो में लैंगिक जनन

250 MCQs ✓

80 Short Q&A ✓

50 Long Q&A ✓

250 Notes Topics ✓

Diagrams ✓ + Homework ✓

Class 12 Biology – Reproduction | Live + Recorded



अवर्ष 2027 के एग्जाम के टॉपर बनोगे

Biology Class 12 – Complete Guide!


Chapter 01 - पुष्पी पादपों में लैंगिक जनन

 250 MCQs ✓

 80 Short Q&A ✓

 50 Long Q&A ✓

 250 Notes Topics ✓

 Diagrams ✓ +  Homework 



इस क्लास के बाद कभी कोई दिक्कत नहीं होगा

Rahul Sir